



# SPECTRA

HISTORIC CONSTRUCTION



## Company Profile

Information, Licenses and Services . . . . . 3-4

## Featured Projects

Hearst Castle . . . . . 5

Apple Tower Theatre . . . . . 6

Santa Barbara Mission . . . . . 7

Pantages Theatre . . . . . 8

El Capitan Theatre . . . . . 9

Catalina Casino . . . . . 10

Gamble House . . . . . 11

Hollywood Bowl . . . . . 12

Culver Studios . . . . . 13

Ennis House . . . . . 14

Brand Library . . . . . 15

Irvine Ranch Historic Park . . . . . 16

Villa Riviera . . . . . 17

Millennium Biltmore Hotel . . . . . 18

Commercial Exchange . . . . . 19

NoMad Hotel . . . . . 20

Urth Caffè . . . . . 21

Hercules Campus . . . . . 22

Museum of Man . . . . . 23

Lopez Adobe . . . . . 24

Team Biographies . . . . . 25-30

Historic Projects List . . . . . 31-32





## Company Information

Founded in 1985, Spectra Company is the leader in historic preservation, restoration and rehabilitation in the western United States offering a wide range of services including historic construction, materials restoration and preservation consulting. For over 30 years, Spectra Company has been entrusted with the rehabilitation of over 300 of the most cherished, historical, architectural and cultural landmarks in the country.

Spectra is one of the few construction companies that self-perform the entire spectrum of restoration services, which allows us to ensure skill, expertise, and quality control on every project. Our award-winning team includes over 150 in-house builders, craftsmen, and preservation professionals. Together we work to meet a shared goal to respect, restore, and revitalize our communities, one building at a time.

Spectra Company Future Headquarters  
350 N Garey Avenue, Pomona, CA



**West Coast's #1 "Historic" Contractor**  
**Preservation Award Winning Company**  
**Excellent Job Safety Record**

## Services | Historic

### CONSTRUCTION • DESIGN

- General Contracting
- Historic Construction
- Design-Build
- Adaptive Reuse
- Structural Retrofit
- Façade Rehabilitation

### MATERIALS RESTORATION

- Stone
- Marble
- Granite
- Terra-Cotta
- Masonry
- Brick
- Adobe
- Concrete
- Bronze
- Brass
- Copper
- Ornamental Metal
- Ornamental Plaster
- Architectural Woodwork
- Finish Carpentry
- Decorative Tile
- Mosaics
- Doors
- Windows
- Sculptures
- Fountains
- Decorative Painting
- Murals
- Conservation
- Gilding
- Faux Finishing

### PRESERVATION CONSULTING

- Preconstruction Services
- Building Assessment and Investigation
- Budget and Cost Estimating
- Surveys and Feasibility Reports
- Salvaging and Cataloging
- Licensed Drone Investigation



### License Classifications

General Contractor Licenses  
CALIFORNIA – 605280  
NEVADA – 0075007  
ARIZONA – 285869

Masonry License

HAWAII

Architect Licenses

CALIFORNIA  
ARIZONA

LEED Accredited Professional

### California Classifications

B-1 General Contractor  
C-17 Glazing  
C-29 Masonry/Adobe  
C-33 Painting and Decorating  
C-35 Lathing and Plastering  
C-39 Roofing and Waterproofing  
C-54 Tile (Ceramic and Mosaic)

Lead and Mold Certified



# Hearst Castle

Hearst Castle was built by newspaper magnate William Randolph Hearst and designed by architect Julia Morgan. Construction began on the 250,000-acre estate in 1919 and the mansion became famous for hosting the Hollywood and political elite of the day. After Hearst left due to his ailing health, the mansion was donated and is currently operated by the California Department of Parks and Recreation which offers daily tours of the estate.

Spectra worked on the castle to complete stone restoration at the window sills and door thresholds, stained glass restoration, preservation consulting, preconstruction documentation, and construction monitoring.

---

## SCOPE OF WORK

- Materials Restoration
- Preconstruction & Design
- Preservation Consulting
- Self-Perform
- Stone
- Wood Windows

### PROJECT LOCATION

750 Hearst Castle Road  
San Simeon, CA

### OWNER

California Department of  
Parks & Recreation

### ORIGINAL ARCHITECT

Julia Morgan

### HISTORIC PRESERVATION ARCHITECT

Page & Turnbull, Inc.

### RESTORATION CONTRACTOR

Spectra Company

### STRUCTURAL ENGINEER

DCI Engineers

### GENERAL CONTRACTOR

Best Contracting Services, Inc.



# Apple Tower Theatre

The Tower Theatre was designed in 1927 by architect Charles Lee, who modeled the interior after the Paris Opera House. It was the first theater in Los Angeles to be wired for talking pictures, as well as the first to have air conditioning. After the theater's closure in 1988, it sat abandoned for nearly 30 years. Today, after a 3-year renovation, it serves as the flagship Apple store for Los Angeles.

Spectra catalogued, removed and reinstalled the historic plaster ceilings, railings and decorative elements in over 1,200 separate pieces. Spectra also surveyed and rehabilitated the terra-cotta exterior facade, including the previously removed clock tower.

## SCOPE OF WORK

Building Condition Assessment

Facade Rehabilitation

Materials Restoration

Ornamental Plaster

Preservation Consulting

Self-Perform

Terra-Cotta

## PROJECT LOCATION

802 S Broadway  
Los Angeles, CA

## OWNER

Apple

## DESIGN ARCHITECT

Foster + Partners

## ARCHITECT OF RECORD

Gruen and Associates

## HISTORIC CONSULTANT

Historic Resources Group

## RESTORATION CONTRACTOR

Spectra Company

## STRUCTURAL ENGINEER

Simpson Gumpertz & Heger

## GENERAL CONTRACTOR

Shawmut

## GFRC SUBCONTRACTOR

Moonlight Molds



# Santa Barbara Mission

The Santa Barbara Mission was established on the Feast of Santa Barbara on December 4, 1786 as the tenth of the twenty-one California Missions to be founded by the Spanish Franciscans. A series of four missions have been built on the site. Santa Barbara Mission is the only mission to remain under the leadership of the Franciscan Friars since its founding. Today, the mission is a parish church of the Archdiocese of Los Angeles.

The church underwent restoration and Spectra joined the design team to complete the rehabilitation. Spectra performed masonry and adobe restoration as well as sandstone, lime wash, and lime plaster restoration.

---

## SCOPE OF WORK

Adobe  
Facade Rehabilitation  
Masonry  
Plaster  
Self-Perform

### PROJECT LOCATION

2201 Laguna Street  
Santa Barbara, CA

### OWNER

Franciscan Province of Santa Barbara

### ORIGINAL ARCHITECT

Father Antonio Ripoll

### CONSERVATOR

Griswold Conservation Associates, LLC

### STRUCTURAL ENGINEER

Nels Roselund

### HISTORIC CONSULTANT

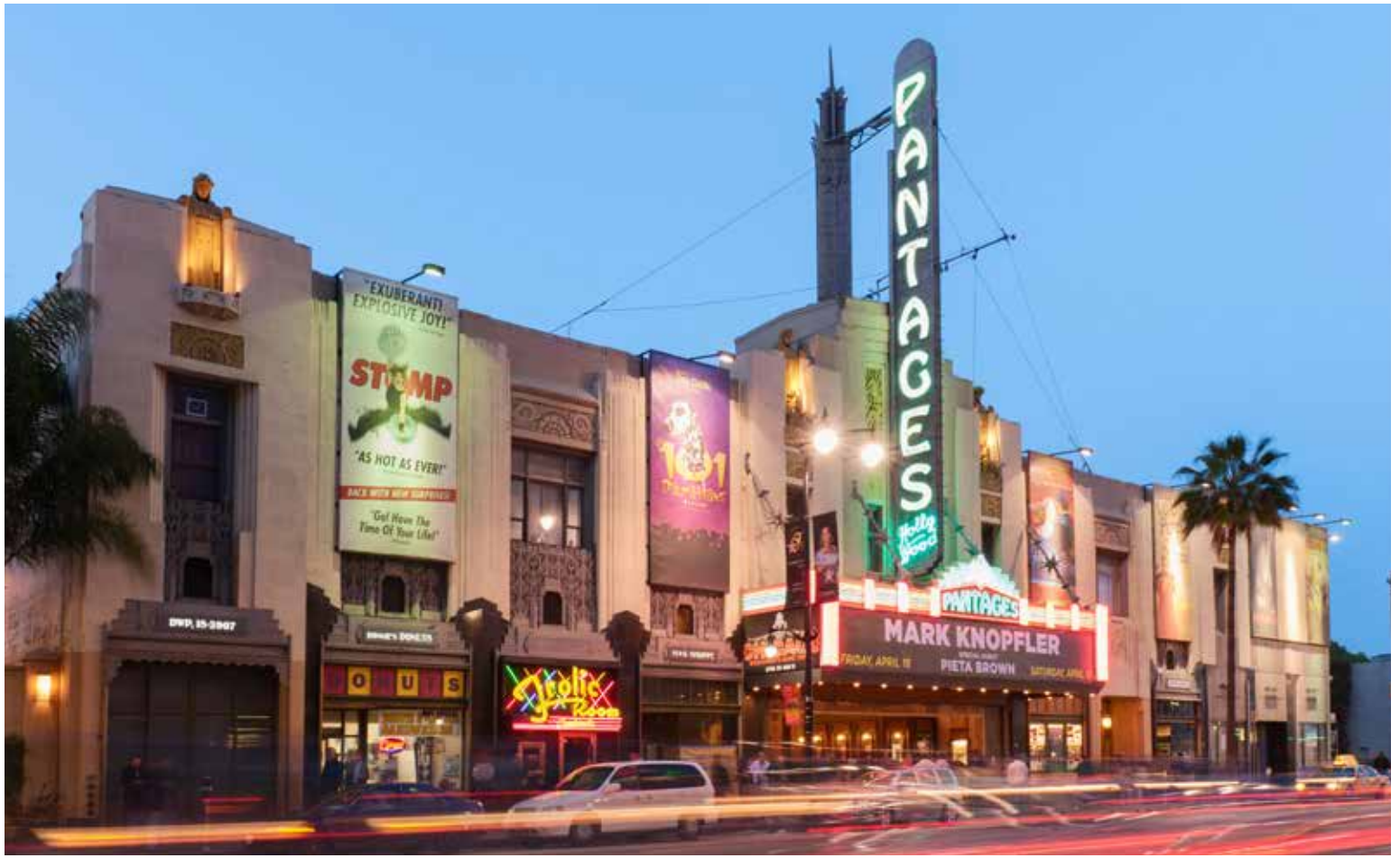
Chattel Architecture

### RESTORATION CONTRACTOR

Spectra Company

### AWARDS

California Preservation Foundation  
Governor's Award



# Pantages Theater

Designed by B. Marcus Priteca, the almost 2,700-seat Art Deco Pantages Theatre opened in Hollywood in 1930. The lavish auditorium and stunning lobby of the theatre has attracted touring musicals and concerts, and became a symbol of Hollywood's golden age where the Academy Awards and multiple movie premieres have taken place.

Spectra Company completed the façade restoration and restoration of many other historic materials.

## SCOPE OF WORK

Architectural Woodwork  
 Concrete Repair  
 Decorative Metal  
 Facade Rehabilitation  
 Materials Restoration  
 Metal Door  
 Metal Windows  
 Ornamental Plaster

Plaster  
 Restoration Painting & Coatings  
 Selective Demolition/Abatement  
 Self-Perform  
 Stone  
 Tile  
 Wood Doors

### PROJECT LOCATION

6233 Hollywood Boulevard  
 Los Angeles, CA

### PROJECT OWNER

Nederlander Company

### ORIGINAL ARCHITECT

B. Marcus Priteca

### ARCHITECT

SPF Architects

### GENERAL CONTRACTOR

Spectra Company

### CONSTRUCTION MANAGER

Wexco International





# El Capitan Theatre

The “Father of Hollywood”, Charles Toberman, and his associate Sid Grauman built the El Capitan Theatre and Office Building in 1926 as well as the famous Egyptian and Chinese Theatres. The cast concrete Spanish Colonial Churrigueresque façade makes this historic building stand out amidst the National Register Hollywood Boulevard Commercial and Entertainment District. Within its first ten years of existence, one hundred and twenty plays were produced at the theatre. The El Capitan Theatre is now home to “Disney” world premieres and other special events.

Spectra has completed a wide variety of services on the El Capitan in recent years including restoration of damaged cast stone figures and recasting of missing portions of damaged statues, preservation consulting, metal restoration, decorative paint finishes, and restoration painting as well as ongoing annual maintenance.

## SCOPE OF WORK

- |                                |                                 |
|--------------------------------|---------------------------------|
| Concrete Repair                | Metal Windows                   |
| Decorative Concrete            | Plaster                         |
| Decorative Metal               | Preconstruction & Design        |
| Decorative Paintings & Murals  | Preservation Consulting         |
| Estimating & Value Engineering | Restoration Painting & Coatings |
| Facade Rehabilitation          | Self-Perform                    |
| General Contracting            | Waterproofing/Roofing           |
| Materials Restoration          |                                 |

### PROJECT LOCATION

6838 Hollywood Boulevard  
Hollywood, CA

### OWNER

California Capital EC, LLC

### ORIGINAL ARCHITECT

G. Albert Lansburgh & Stiles O. Clements

### ARCHITECT

JAG Architects

### HISTORIC PRESERVATION ARCHITECT

John Fidler Preservation Technology, Inc.

### STRUCTURAL ENGINEER

Melvyn Green and Associates, Inc.

### GENERAL CONTRACTOR

Spectra Company



# Catalina Casino

Built by chewing gum magnate William Wrigley Jr, the Catalina Casino is an Art Deco/Mediterranean Revival style circular building. The casino, meaning ‘gathering place’, was originally designed as a movie theater for films with sound. The 12-story building also has a ballroom on the upper level, adorned with sterling silver and gold-leaf accents.

Spectra completed a wide variety of services as part of its rehabilitation, including façade restoration, ornamental cast stone, decorative painting, faux finish, structural repairs, and preservation consulting.

## SCOPE OF WORK

- Brick
- Concrete Repair
- Decorative Metal
- Decorative Paintings & Murals
- Facade Rehabilitation
- Lighting & Chandeliers
- Materials Restoration
- Ornamental Plaster
- Plaster
- Preservation Consulting
- Restoration Painting & Coatings
- Self-Perform
- Stone
- Structural Retrofit
- Waterproofing/Roofing
- Wood Doors
- Wood Windows

## PROJECT LOCATION

1 Casino Way  
Avalon, CA

## OWNER

Santa Catalina Island Company

## RESTORATION CONTRACTOR

Spectra Company

## AWARDS

Los Angeles Conservancy



## Gamble House

Often described as “America’s Arts and Crafts masterpiece”, the Gamble House stands today as one of the most famous and beloved historic houses in America. David and Mary Gamble commissioned the house to be built in 1908 by architects Charles and Henry Greene. The Greene brothers presented a breakthrough in American architectural design featuring Japanese woodwork and inspiration drawn from nature. The house features wide terraces, sleeping porches, and large overhanging eaves.

The home underwent a complete exterior rehabilitation that was overseen by an experienced team of historic architects, consultants and conservators. Some of the finest examples of architectural woodwork exists at the Gamble House. The Spectra team on this restoration project consisted of expert artisans who worked to restore, replicate and refinish the most intricate of architectural woodwork.

### SCOPE OF WORK

Architectural Woodwork  
Conservation  
Materials Restoration  
Selective Demolition/Abatement  
Self-Perform

Waterproofing/Roofing  
Wood Doors  
Wood Windows

#### PROJECT LOCATION

4 Westmoreland Place  
Pasadena, CA

#### OWNER

USC and City of Pasadena

#### ORIGINAL ARCHITECT

Greene and Greene Architects

#### HISTORIC PRESERVATION ARCHITECT

Kelly Sutherlin McLeod Architecture, Inc.,

#### CONSERVATOR

Griswold Conservation Associates, LLC

#### HISTORIC CONSULTANT

Historic Resources Group

#### GENERAL CONTRACTOR

Voss Industries

#### RESTORATION CONTRACTOR

Spectra Company



# Hollywood Bowl

The Hollywood Bowl is the world's largest outdoor amphitheater. It may be the official summer home to the Los Angeles Philharmonic, but it is famously known for hosting famous musicians, dancers, and entertainers throughout the year. The original Hollywood Bowl, which opened on July 11 in 1922, was a wooden platform with a canvas top, surrounded by moveable benches for the audience. In 2004, after continued degradation of the shell's acoustics, the architectural firm of Hodgetts and Fung designed a replacement shell incorporating the prominent front arch of the 1926 design, the wide layout of the 1928 shell, and the white finish of the 1929 design.

Spectra completed concrete restoration of the buttress, metal restoration, and tile restoration.

---

## SCOPE OF WORK

Concrete Repair

Decorative Metal

Materials Restoration

Self-Perform

Tile

## PROJECT LOCATION

2301 N Highland Avenue  
Los Angeles, CA

## OWNER

Los Angeles Philharmonic Association

## ORIGINAL ARCHITECT

Allied Architects

## ARCHITECT

Bill Caskey & Associates, Inc.

(Buttress and Railing Restoration to Scope)

## HISTORIC PRESERVATION ARCHITECT

John Fidler Preservation Technology, Inc.

## GENERAL CONTRACTOR

MATT Construction

## RESTORATION CONTRACTOR

Spectra Company



# Culver Studios

Culver Studios is a movie studio lot originally created by silent movie pioneer Thomas H. Ince in 1918. The first structure to go up on the lot was 'The Mansion', which is a colonial style building that was modeled after George Washington's home at Mount Vernon. Over the years, a theater, multiple bungalows and a blacklot for outdoor sets were added to the property. The lot went through a redevelopment and Culver Studios is now home to Amazon's Los Angeles area operations.

Spectra Company rehabilitated the main mansion, including a major structural retrofit that was carefully concealed. In addition, four of the historic bungalows were relocated and rehabilitated along with several more historic buildings.

---

## SCOPE OF WORK

Architectural Woodwork  
Building Relocation  
Facade Rehabilitation  
Self-Perform  
Structural Retrofit

## PROJECT LOCATION

9336 Washington Boulevard  
Culver City, CA

## OWNER

Hackman Capital Partners

## ARCHITECT

Gensler

## PRESERVATION ARCHITECT

Kaplan Chen Kaplan

## HISTORIC CONSULTANT

ESA

## RESTORATION CONTRACTOR

Spectra Company

## STRUCTURAL ENGINEER

John Labib & Associates

## GENERAL CONTRACTOR

Taslimi



## Frank Lloyd Wright's Ennis House

Frank Lloyd Wright's Ennis House is one of four 'textile block' homes in Los Angeles, constructed with patterned concrete blocks that give a unique texture to the exterior façade. The house consists of an estimated 27,000 to 40,000 of these concrete blocks. After the condition of the house deteriorated from earthquake and rain damage, it was listed on the National Trust for Historic Preservation's most endangered places.

Spectra Company contributed to the restoration, which included structural upgrades, materials restoration and new roofing, conservation of the textile blocks, window and door restoration, exterior cleaning, and hardware restoration.

---

### SCOPE OF WORK

Architectural Woodwork  
Concrete Repair  
Decorative Concrete  
Decorative Metal  
Facade Rehabilitation  
Materials Restoration  
Metal Door

Restoration Painting & Coatings  
Selective Demolition/Abatement  
Self-Perform  
Stone  
Waterproofing/Roofing  
Wood Doors  
Wood Windows

PROJECT LOCATION  
2607 Glendower Avenue  
Los Angeles, CA

OWNER  
Ennis House Foundation

ORIGINAL ARCHITECT  
Frank Lloyd Wright

PRESERVATION ARCHITECT  
Eric Lloyd Wright Architects and Planners

STRUCTURAL ENGINEER  
Melvyn Green and Associates

HISTORIC CONSULTANT  
Historic Resources Group

CONSERVATION CONSULTANT  
John Fidler Preservation Technology

RESTORATION CONTRACTOR  
Spectra Company



## Brand Library

At the base of the Verdugo Mountains lays a 5,000 square foot mansion built by Leslie Coombs Brand in 1904. Otherwise known as El Miradero, which means “vantage point”, the mansion represents the unique Indo-Saracenic architectural style influenced by Islamic and Indian design, including repeated scalloped arches. When Brand passed away in 1925, he donated the house and its surrounding 488 acres to the City of Glendale to be used as a public library and public park. By 1956, the house was converted into the library that still stands today.

Spectra proudly completed restoration work of its historic features during the project including exterior ornamental plaster and re-creation of the historic ceiling murals found throughout the library. The murals were rediscovered upon removal of suspended ceilings that kept them hidden for decades.

### SCOPE OF WORK

Architectural Woodwork

Conservation

Decorative Paintings & Murals

Facade Rehabilitation

Materials Restoration

Ornamental Plaster

Plaster

Restoration Painting & Coatings

Self-Perform

Wood Doors

Wood Windows

### PROJECT LOCATION

1601 W Mountain Street  
Glendale, CA

### OWNER

City of Glendale

### ORIGINAL ARCHITECT

Leslie C. Brand

### ARCHITECT

Gruen and Associates

### HISTORIC PRESERVATION ARCHITECT

Offenhauser/Mekeel Architects

### STRUCTURAL ENGINEER

Nabih Youssef Associates

### GENERAL CONTRACTOR

George C. Hopkins Construction Company, Inc.

### RESTORATION CONTRACTOR

Spectra Company

### AWARDS

Los Angeles Conservancy



# Irvine Ranch Historic Park

The Irvine Ranch was established by James Irvine in the 1860's. Over the years, multiple buildings were added to accommodate the success of farming operations that took place on the property. Irvine Ranch was once California's largest producers of Valencia oranges, beans and barley.

Spectra Company oversaw the rehabilitation of seven of the original Office buildings as the General Contractor including: Mess Hall, Bath House, Early Office and several structures on Foreman's Row. The project included structural, site and accessibility improvements, and restoration of an original wallpaper mural. These structures now house the offices for the OC Parks Department.

## SCOPE OF WORK

Architectural Woodwork  
 Decorative Paintings & Murals  
 Facade Rehabilitation  
 General Contracting  
 Restoration Painting & Coatings  
 Selective Demolition/Abatement

Self-Perform  
 Structural Retrofit  
 Wall-Coverings  
 Waterproofing/Roofing  
 Wood Doors  
 Wood Windows

PROJECT LOCATION  
 13042 Old Myford Road  
 Irvine, CA

OWNER  
 OC Parks

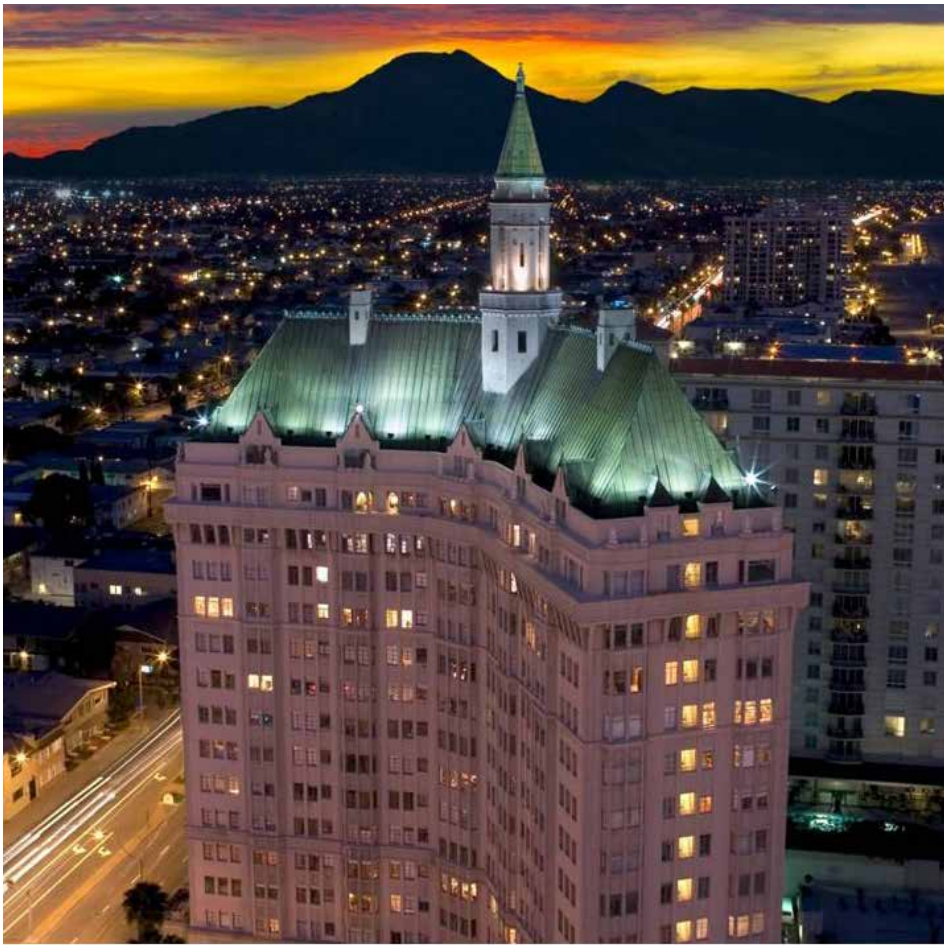
HISTORIC PRESERVATION ARCHITECT  
 Thirtieth Street Architects

STRUCTURAL ENGINEER  
 Structural Focus

GENERAL CONTRACTOR  
 Spectra Company

CONSTRUCTION MANAGER  
 Harris and Associates





# Villa Riviera

The Villa Riviera was completed in 1929 as a residential stock co-operative apartment building. At the time, it was the second tallest building in Southern California only after Los Angeles City Hall. The building is one of the most significant landmarks in Long Beach and serves as the visual focal point and entrance to downtown Long Beach.

Spectra completed a facade rehabilitation with a wide scope of restoration services including a complete re-creation of the ornate original bronze doors, based on historic photographs. Many of the grotesques were re-created from molds made from extant figures.

## SCOPE OF WORK

- Architectural Woodwork
- Concrete Repair
- Decorative Concrete
- Decorative Metal
- Decorative Paintings & Murals
- Facade Rehabilitation
- Lighting & Chandeliers
- Masonry
- Metal Door

- Ornamental Plaster
- Plaster
- Selective Demolition/Abatement
- Self-Perform
- Structural Retrofit
- Waterproofing/Roofing
- Wood Windows

### PROJECT LOCATION

800 E Ocean Boulevard  
Long Beach, CA

### OWNER

Villa Riviera HOA

### ORIGINAL ARCHITECT

Richard King

### HISTORIC PRESERVATION ARCHITECT

Martin Eli Weil Restoration

### STRUCTURAL ENGINEER

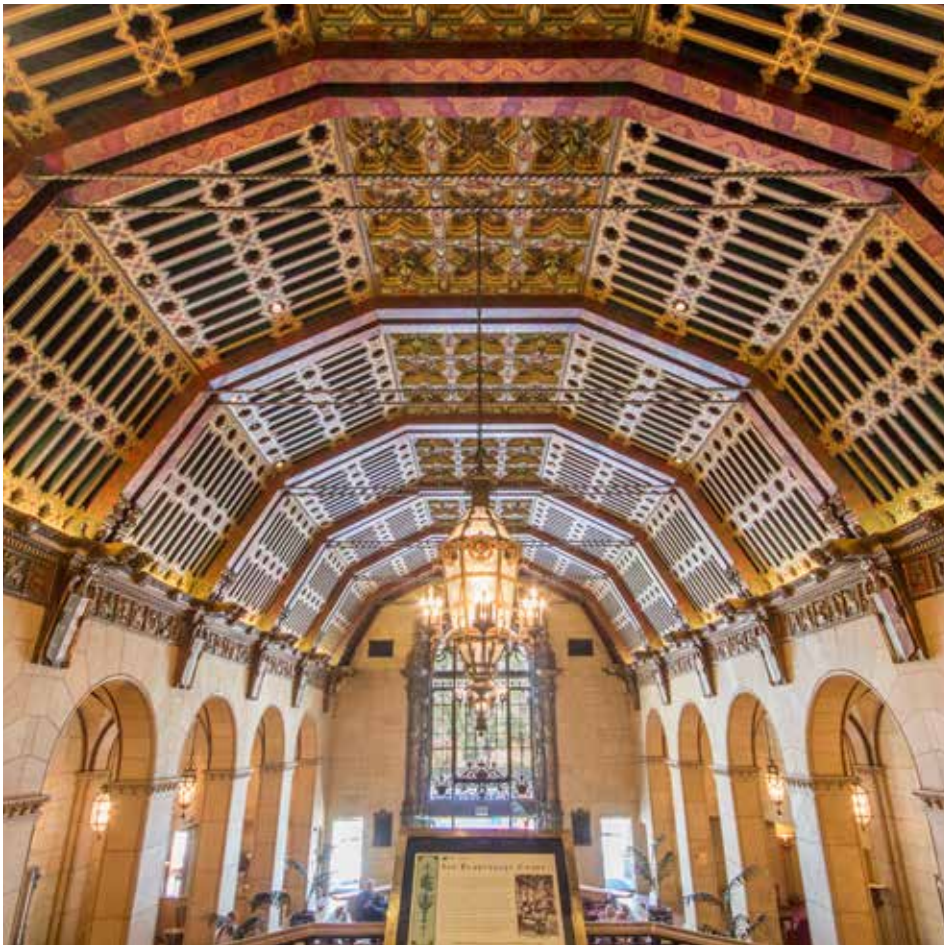
Castillo Engineering

### GENERAL CONTRACTOR

Spectra Company

### AWARDS

- Long Beach Heritage
- Los Angeles Conservancy
- California Preservation Foundation



# Millennium Biltmore Hotel

The Millennium Biltmore Hotel was built in 1923 by Schultze & Weaver. The exterior façade beautifully incorporates a combination of Spanish-Italian Renaissance Revival, Mediterranean Revival, and Beaux Arts styles. The detail of the interior is exquisite, with hand painted frescos, murals, carved marble fountains, lead crystal chandeliers, and cast bronze stairwells.

Spectra completed decorative painting services including gilded finishes, metallic leaf, aging and color wash, faux bois, and stone finishes. The scope of the entire project includes conservation, cleaning, decorative painting, ornamental plaster, gilding-gold leaf, faux finish, mural restoration, and preservation consulting.

## SCOPE OF WORK

- Conservation
- Decorative Paintings & Murals
- Ornamental Plaster
- Plaster
- Preservation Consulting
- Restoration Painting & Coatings
- Self-Perform

PROJECT LOCATION  
506 S Grand Avenue  
Los Angeles, CA

OWNER  
Millennium & Copthorne Hotels

ORIGINAL ARCHITECT  
Schultze & Weaver

GENERAL CONTRACTOR  
Spectra Company



# Commercial Exchange

The 13-story Commercial Exchange Building was designed by the architectural firm of Walker and Eisen. Completed in 1924, the building served as the headquarters of the Owl Drug Co., and housed the publishing company of “Tarzan” author Edgar Rice Burroughs. It was the tallest building in its area at the time and also boasted three high-speed elevators, offices with abundant light, elegant mahogany trim and millwork, and coveted two-hour street parking.

Vacant since the mid-1980s, the building has now been converted by NY-based hotel developer Sydell Group into their new trendy hostels concept called “Free-hand.” The iconic Commercial Exchange neon sign, one of the tallest in LA, was also restored as part of the project. Spectra performed the facade rehabilitation and restored historic ceilings, replicated and restored historic terra-cotta and brick unit masonry, restored and repainted decoratively painted plaster ceilings, and restored original building entrances that had been significantly altered.

**PROJECT LOCATION**  
416 W 8th Street  
Los Angeles, CA

**OWNER**  
Sydell Group

**ORIGINAL ARCHITECT**  
Walker and Eisen

**ARCHITECT**  
Killefer Flammang Architects

**HISTORIC PRESERVATION ARCHITECT**  
Historic Consultants, Inc.

**STRUCTURAL ENGINEER**  
Koenigsberg Engineering, P.C.

**GENERAL CONTRACTOR**  
Shangri-La Construction, LP

**RESTORATION CONTRACTOR**  
Spectra Company

**SIGNAGE RESTORIATOR**  
OneOne7y

**AWARDS**  
California Preservation Foundation  
Los Angeles Conservancy

## SCOPE OF WORK

- Adaptive Reuse
- Decorative Concrete
- Decorative Metal
- Facade Rehabilitation
- Masonry
- Ornamental Plaster
- Plaster
- Restoration Painting & Coatings
- Self-Perform
- Terra-Cotta



# NoMad Hotel

Located at the corner of Olive and 7th Street in Downtown Los Angeles, Giannini Place was the Los Angeles headquarters for the Bank of Italy. Acclaimed architecture firm Morgan, Walls & Clements was commissioned to design the new bank. Designed in the neoclassical style, the 12-story building features Doric columns, marble floors and an ornate golden-coffered ceiling in the main lobby.

In 2015, the New York-based development firm Sydell Group purchased the abandoned office building. They launched an extensive project to adaptively rehabilitate the building into the chic NoMad Hotel. The space accommodates 250 guest rooms, a rooftop pool, an event deck, and street level restaurant and retail space. Spectra collaborated with Sydell Group, RD Olson, and KFA to restore the 1920's-era structure.

## SCOPE OF WORK

Adaptive Reuse

Brick

Decorative Metal

Facade Rehabilitation

Masonry

Materials Restoration

Metal Door

Metal Windows

Plaster

Restoration Painting & Coatings

Self-Perform

Stone

Terra-Cotta

Wood Windows

## PROJECT LOCATION

649 S Olive Street  
Los Angeles, CA

## OWNER

Sydell Group

## ARCHITECT/HISTORIC ARCHITECT

KFA

## STRUCTURAL ENGINEER

Koenigsberg Engineering, P.C.

## GENERAL CONTRACTOR

Shangri-La Construction

## RESTORATION CONTRACTOR

Spectra Company

## MECHANICAL, PLUMBING AND ELECTRICAL ENGINEER

Creative Engineering Group

## CIVIL ENGINEER ENGINEER

KPFF

## HISTORIC PRESERVATION CONSULTANT

GPA Consulting

## AWARDS

Los Angeles Conservancy



# Urth Caffe

The Urth Caffe is located in the Old Town Historic District in Orange, which is California’s largest National Register district. The building that houses it is one of the oldest contributing historic buildings within the district, with historic sites constructed there as early as 1888.

Spectra Company, working as both the General and Restoration Contractor, performed several historic rehabilitation services including structural retrofit, façade rehabilitation, and restoration of original openings that were missing. Other services included ornamental metal restoration, sign fabrication, roof replacement, both the restaurant and office tenant improvements, and restoring the entire storefront of the building, as close as possible, to its early 1900’s period of significance.

## SCOPE OF WORK

- |                                |                                 |                       |
|--------------------------------|---------------------------------|-----------------------|
| Adaptive Reuse                 | Fountains                       | Self-Perform          |
| Architectural Woodwork         | General Contracting             | Structural Retrofit   |
| Brick                          | Lighting & Chandeliers          | Themed Construction   |
| Conservation                   | Masonry                         | Tile                  |
| Decorative Metal               | Materials Restoration           | Waterproofing/Roofing |
| Decorative Paintings & Murals  | Preconstruction & Design        | Wood Doors            |
| Design Build                   | Preservation Consulting         | Wood Windows          |
| Estimating & Value Engineering | Restoration Painting & Coatings |                       |
| Facade Rehabilitation          | Selective Demolition/ Abatement |                       |

**PROJECT LOCATION**  
100 W Chapman Avenue  
Orange, CA

**OWNER**  
Urth Old Towne Development, LLC

**ARCHITECT**  
SF Jones Architects

**GENERAL/RESTORATION CONTRACTOR**  
Spectra Company

**STRUCTURAL ENGINEER**  
Grimm & Chen Structural Engineering, Inc.

**MECHANICAL AND PLUMBING ENGINEER**  
Zero and Associates

**ELECTRICAL ENGINEER**  
OMG Electrical Engineers

**AWARDS**  
California Preservation Foundation



# Hercules Campus

Hercules Campus, formerly known as Hughes Aircraft Company, was built in 1941 by Howard Hughes. This large 28-acre campus with 530,000 combined square feet of space was used to produce aircraft, atmospheric entry probes, and guided missiles, to name a few. The campus underwent restoration in recent years to adaptively reuse it for corporate office use.

Spectra started working on the campus in 2015 to restore the metal and wood windows and continued to finish a wide scope of work on many of the buildings on campus including the interior restoration of Howard Hughes' office.

## SCOPE OF WORK

- |                                 |                       |
|---------------------------------|-----------------------|
| Adaptive Reuse                  | Self-Perform          |
| Architectural Woodwork          | Waterproofing/Roofing |
| Facade Rehabilitation           | Wood Doors            |
| Metal Door                      | Wood Windows          |
| Metal Windows                   |                       |
| Restoration Painting & Coatings |                       |

## PROJECT LOCATION

12101 Bluff Creek Drive  
Los Angeles, CA

## OWNER

The Ratkovich Company

## ORIGINAL ARCHITECT

Henry Gogerty

## ARCHITECT

Killefer Flammang Architects

## HISTORIC ARCHITECT

Levin & Associates Architects

## STRUCTURAL ENGINEER

Nabih Youseff and Associates, Structural Focus

## HISTORIC CONSULTANT

Galvin Preservation Associates

## RESTORATION CONTRACTOR

Spectra Company

## AWARDS

AIA Los Angeles  
Los Angeles Conservancy



# Museum of Man

In 1915 The Story of Man through the Ages exhibit showed at the Panama-California Exposition. The museum's name was later changed to the San Diego Museum of Man due to the museum's concentration on anthropology. During World War II, the museum was converted into a hospital and later returned to its original state in 1951.

Spectra Company assisted with the museum's façade restoration including restoring wood windows, timber beam restoration, replication of ornamental cast stone, ceramic tile, and restoration on the dome.

---

## SCOPE OF WORK

- Concrete Repair
- Decorative Concrete
- Facade Rehabilitation
- Masonry
- Materials Restoration
- Self-Perform
- Tile
- Waterproofing/Roofing
- Wood Windows

## PROJECT LOCATION

1350 El Prado  
San Diego, CA

## OWNER

City of San Diego

## ORIGINAL ARCHITECT

Bertram Goodhue

## HISTORIC PRESERVATION ARCHITECT

Heritage Architecture & Planning

## STRUCTURAL ENGINEER

Miller/Jaquess Structural Engineers

## GENERAL CONTRACTOR

Fordyce Construction

## RESTORATION CONTRACTOR

Spectra Company

## AWARDS

American Public Works Association



# Lopez Adobe

The Lopez Adobe was completed in 1883 by Valentin Lopez. It is one of the oldest private residences, and the first two-story adobe built as a residence in the San Fernando Valley.

Spectra Company assisted with the restoration of the Lopez Adobe by replicating, repairing and structurally stabilizing the adobe walls, as well as other wood restoration.

---

## SCOPE OF WORK

Adobe  
Architectural Woodwork  
Facade Rehabilitation  
Materials Restoration  
Plaster  
Restoration Painting & Coatings  
Self-Perform  
Structural Retrofit  
Wood Doors  
Wood Windows

## PROJECT LOCATION

1100 Pico Street  
San Fernando, CA

## OWNER

City of San Fernando

## ORIGINAL ARCHITECT

Valentin Lopez

## HISTORIC PRESERVATION ARCHITECT

Drisko Studio Architects

## STRUCTURAL ENGINEER

Melvyn Green and Associates, Inc.

## GENERAL CONTRACTOR

Access Pacific, Inc.

## RESTORATION CONTRACTOR

Spectra Company

## AWARDS

Los Angeles Conservancy  
Governor's Award

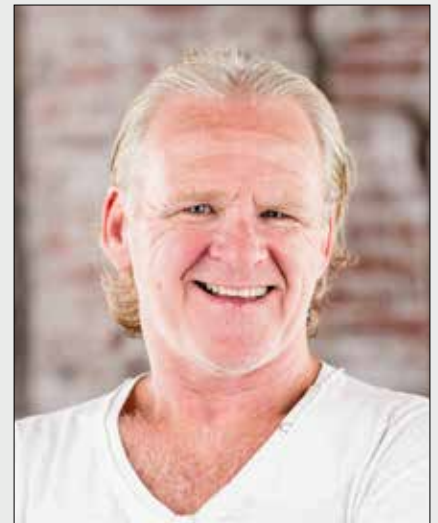


## Ray Adamyk

Chief Executive Officer

Ray Adamyk began his career in construction at the young age of 15, working with his uncle in Canada. At 25, he visited the state of California to train for a triathlon and ultimately decided to call the golden state home. Ray then utilized his adept construction and business experience, combined with his love for historic structures, to start Spectra Company in 1985. He has since grown Spectra into the largest historic construction company on the West Coast.

Ray believes historic structures are the key to defining and preserving the character and legacies of communities. His philosophy has become both the company's culture and mission: Respect, Restore & Revitalize. He served on the Board of Trustees for the California Preservation Foundation from 2008 to 2014, holds memberships in the Association for Preservation Technology International, National Trust for Historic Preservation, California Preservation Foundation, Los Angeles Conservancy, Western Association for Art Conservation, and AIA LA Affiliation. His historic preservation projects have received recognition from the National Trust of Historic Preservation, California Preservation Foundation, Los Angeles Conservancy, Long Beach Heritage, and Pasadena Heritage.



## Tim Harris

Chief Financial Officer

Tim Harris works as the Chief Financial Officer for Spectra Company. Tim is responsible for the oversight and management of Spectra Company personnel. He manages the logistics of the company, oversees systems development, organizational structure, and has more than 10 years of experience with historic preservation projects and with Spectra Company. Tim is a graduate of Western Michigan University and holds a Degree in Business Management.

As the manager of the project management, administration and scheduling staff, he is integrally responsible for the successful completion of all Spectra projects. Tim is also directly accessible to all clients, coordinating with them to foster great working relationships and client satisfaction.



## Reuben Lombardo

Senior Preservation Estimator

Reuben Lombardo works as the Senior Preservation Estimator for Spectra Company. He has extensive experience, and is a key team member of developing and maintaining Spectra's high standards of preservation practices. Having a Master of Fine Art from UCLA and being a hands-on restoration craftsman for many years, his areas of expertise include ornamental concrete and plaster, terra-cotta and tile, historic murals and decorative painting, sculptures, mold-making, stone, wood, and metal restoration. He has shared his expertise in the historic field by serving two terms on the Board of Directors for WCAPTI (Western Chapter of the Association of Preservation Technologies) and participated in multiple presentations and workshops on the restoration/preservation of historic structures for WCAPT, APTI, CPF, LA Conservancy, APF (Arizona Preservation Foundation) and ACI (American Concrete Institute). Reuben's numerous restoration projects include:

- Hoover Dam Exhibit Hall, Boulder City, NV
- Catalina Casino, Avalon, CA
- Museum of Man, San Diego, CA
- Greystone Mansion, Beverly Hills, CA
- Millennium Biltmore Hotel, Los Angeles, CA
- Hearst Castle, San Simeon, CA
- Caltech Linde Robinson Lab, Pasadena, CA
- Pantages Theatre, Hollywood, CA
- Ennis House, Los Angeles, CA
- Santa Barbara Mission, Santa Barbara, CA



## Dick Gee, AIA, Leed AP

Historic Architect and Project Manager

Dick Gee works as the Lead Architect as well as a Project Manager for Spectra Company. Having spent most of his career as an architect, he has over 32 years of experience in architecture and is qualified as a Historic Preservation Architect under the Secretary of Interior's Professional Qualifications Standards. He is a licensed architect in California and Arizona, and has previously served as the lead principal of the Los Angeles office for JAG Architects. As a Project Manager for Spectra, Dick oversees preservation consulting, design-build and historic construction projects, adding a broad range of experience to enhance owner, architect, engineer and historic consultant collaboration. All in all, he has over 30 years of experience working on historic projects. Dick has been awarded California Preservation Foundation, Los Angeles Conservancy, and local preservation awards for numerous projects. He brings a unique comprehensive understanding to preservation projects, having worked on every aspect from design, approvals, preparing historic tax credit applications, construction and development. Some of his preservation projects at Spectra include:

- Commercial Exchange Building, Los Angeles, CA
- Crystal Cove Cottages, Newport Coast, CA
- Culver Studios, Culver City, CA
- El Capitan Theatre, Hollywood, CA
- George Key Ranch Historic Park, Placentia, CA
- NoMad Hotel, Los Angeles, CA
- Ocean Center Building, Long Beach, CA
- Porter Hall at Pilgrim Place, Claremont, CA
- San Ysidro Land Port of Entry, San Ysidro, CA
- Urth Caffe, Orange, CA
- San Gabriel Mission, San Gabriel, CA
- Pala Tribe Historic Buildings, Pala, CA



## John Tiersma

Director of Construction

John Tiersma has 39+ years-experience as a project manager and scheduler, adhering to plans and specifications, developing schedules, estimating, and preparing and negotiating contracts. He is responsible for all aspects of design and construction, from start to finish, as well as managing team members and supporting staff. As Director of Construction, John works directly with Spectra's project managers, superintendents and project engineers on developing and bidding general contracting projects. John has been the lead on many incredible projects such as:

- Crystal Cove Cottages, Newport Coast, CA
- YMCA 'The Village', Pomona, CA
- Hearst Castle, San Simeon, CA
- San Diego Police Department, San Diego, CA
- University House, San Diego, CA



## Justin Warren

Senior Project Manager

Justin Warren works as the Senior Project Manager for Spectra Company. He joined the company in 2015 and came with over 20 years of experience in the construction industry. Having started in the residential arena, he soon transitioned to the commercial side of the industry. Although Justin's expertise is varied, his specialty and interest has always been architectural woodwork and finish carpentry. While most of his knowledge comes from hands-on experience, Justin holds a General Contractor license and previously managed his own General Contracting company. He has gone from a carpenter, to a foreman, onto a superintendent, and ultimately a project manager. His impeccable work ethic coupled with his experience and knowledge make him a key team member for Spectra Company. Justin has been involved with the following projects:

- Crystal Cove Cottages, Newport Coast, CA
- McKinley High School, Honolulu, HI
- Beverly Hills High School, Beverly Hills, CA
- Monterey Government Center, Salinas, CA
- CBS Columbia Square, Hollywood, CA
- NoMad Hotel, Los Angeles, CA
- Clark Memorial Library of UCLA, Westwood, CA
- Pigeon Point Lighthouse, Pescadero, CA
- Ford Theatre, Hollywood, CA
- San Ysidro Customs House, San Ysidro, CA
- Ford Factory, Los Angeles, CA
- Tesoro Adobe, Valencia, CA

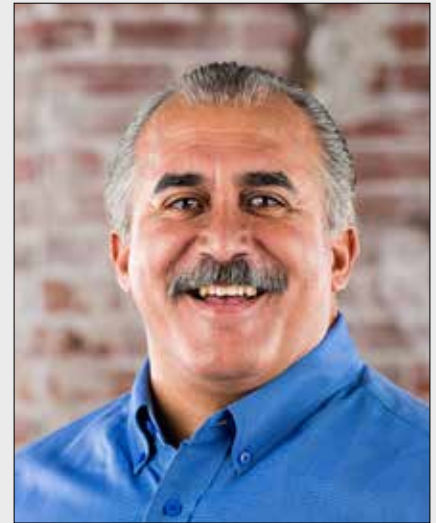


## John Gonzalez

Senior Estimator and Project Manager

John Gonzalez works as a Senior Estimator and Project Manager for Spectra Company specializing in waterproofing and production. John has worked in the restoration and waterproofing field for over 20 years. His reputation in the industry is unmatched as an expert in application and creative problem solving. His areas of specialty include waterproofing, leak analysis, deck coatings, wall coatings, epoxy/grout injection, elastomeric coatings, below-grade and negative-side waterproofing. His knowledge and expertise make him a favorite of customers and consultants. Some of his projects with Spectra Company include:

- Alex Theatre, Glendale, CA
- Broadway Trade Center, Los Angeles, CA
- California African American Museum, Los Angeles, CA
- El Capitan Theatre, Hollywood, CA
- Greystone Mansion, Beverly Hills, CA
- Millennium Biltmore Hotel, Los Angeles, CA
- One Colorado, Pasadena, CA
- Pantages Theatre, Hollywood, CA
- Santa Barbara Mission, Santa Barbara, CA
- Villa Riviera, Long Beach, CA



## Ean Frank

Project Manager and Estimator

Ean Frank joined Spectra company with over 20 years of experience operating exclusively on historically significant projects. His project management skills have enabled him to bridge communication between tradesmen, owners, managers and designers, all while achieving the common goals between them. Ean has been a long-standing member of the Association for Preservation Technology, a preservation consultant to both architects and contractors, as well as a paid speaker on LEED in preservation. His rehabilitation and restoration endeavors include nearly 100 historic landmarks. Some of which are:

- Tule Lake Segregation Center National Monument, Newell, CA
- South Yuba River Bridge, Penn Valley, CA
- Tower Theatre, Los Angeles, CA
- Atwater Kent Museum, Philadelphia, PA
- Congress Hall, Philadelphia, PA
- Drumthwacket, Princeton, NJ
- The Solitude Mansion, Philadelphia, PA
- Independence Hall, Philadelphia, PA
- Lucy the Elephant, Margate City, NJ
- Pearl S. Buck House, Bucks County, PA
- Philadelphia Lazaretto, Delaware County, PA
- Sweeton House, Cherry Hill, NJ



## Andrew Franco

Project Manager

Andrew Franco works as a Project Manager for Spectra Company. He brings extensive management past and current experience from over 600 projects in the southwest region. His experience covers several bullet-resistant and security industries including financial institutions such as Bank of America and government buildings. Andrew's experience with financial and government projects is balanced with knowledge in healthcare, higher education, and utility facilities. Andrew developed his foundation in management at the San Joaquin Valley College where he received his degree in Construction Management and graduated as the Construction Management Salutatorian.

- San Gabriel Mission, San Gabriel, CA
- Hotel Del Coronado, Coronado, CA
- Ocean Center Building, Long Beach, CA
- Breakers Building, Long Beach, CA
- Davis-Monthan Air Force Base, Tucson, AZ
- Las Vegas Metropolitan Police Department, Las Vegas, NV
- Orange County Sheriff's Department, Orange, CA
- Seattle Police Department Headquarters, Seattle, WA



## Rafael Barrios

Project Manager and Estimator

Rafael Barrios works as both a Project Manager and Estimator for Spectra Company. Rafael has been a professional in the construction industry for over 25 years. He is very well-versed in painting, drywall, carpentry, masonry, tile and granite, waterproofing, glazing, antique restoration and preservation. Rafael's dedication to his hands-on work lead him to managing and supervising large crews and projects, as well as estimating. His wide range of skills makes him an integral part of the Spectra Company team and his past experience as a construction supervisor enables him to bring intimate knowledge of what is required to be successful in the field. Rafael oversees significant construction and restoration projects for Spectra, such as:

- Bob Hope Patriotic Hall, Los Angeles, CA
- Broadway Trade Center, Los Angeles, CA
- Ennis House, Los Angeles, CA
- Globe Theatre, Los Angeles, CA
- Hollywood Palladium, Hollywood, CA
- Hoover Dam Exhibit Hall, Boulder City, NV
- Scotty's Castle, Death Valley, CA
- California Club, Los Angeles, CA
- Naco Land Port of Entry, Naco, AZ
- Douglas Land Port of Entry, Douglas, AZ
- Pioneer Oil Refinery, Santa Clarita, CA



## Mark Green

Senior Superintendent

Mark Green works as a Senior Superintendent for Spectra Company and has over 30 years in the specialty historic construction industry. He has worked as owner liaison for field operations, leading weekly production meetings, developing and maintaining schedules, means and methods of production, subcontractor field management, layout of work, and ensuring compliance with applicable building codes and standards. Mark is responsible for smooth and consistent transfer of information between company field team, project managers, and owner clients. During his tenure, he has overseen the following projects:



- Crystal Cove Cottages, Newport Beach, CA
- San Gabriel Mission, San Gabriel, CA
- Pomona YMCA, Pomona, CA
- Irvine Ranch Historic Park, Irvine, CA
- Breed Street Shul, Los Angeles, CA
- Leo Carrillo Ranch, Carlsbad, CA
- Los Peñasquitos Ranch House, San Diego, CA
- Mother Colony House, Anaheim, CA
- Montanez Adobe, San Juan Capistrano, CA
- Porter Hall, Claremont, CA
- University House Adobe, La Jolla, CA
- Warner Springs Ranch, Warner Springs, CA
- Walker House, San Dimas, CA
- Culver Studios, Culver City, CA

## Historic Projects List

### Agua Dolce, CA

Ranger Residence – Vasquez Rocks

### Alhambra, CA

LA Department of Public Works HQ  
Sacred Heart House

### Amador City, CA

Amador City Firehouse

### Anaheim, CA

Anaheim Cemetery  
Anaheim Packing House  
Mother Colony House of  
Founders' Park  
Packard Building

### Arcadia, CA

LA County Arboretum  
Santa Anita Racetrack

### Avalon, CA

Catalina Casino  
Elmer Gray House

### Berkeley, CA

UC Berkeley Bowles Hall

### Beverly Hills, CA

421 N Beverly Drive  
Beverly Hills City Hall  
Beverly Hills Electric Fountain  
Beverly Hills High School  
First Bank of Beverly Hills  
Golden Triangle Building  
Greystone Mansion  
Saban Theater/Fox Wilshire Theater  
North Linden Drive  
Peninsula Hotel  
Tiffany & Co.  
Virginia Robinson Gardens  
Wallis Annenberg Center for the  
Performing Arts (Beverly Hills  
Post Office)

### Boulder City, NV

100 & 200 Date Street  
Hoover Dam Exhibit Hall  
Hoover Dam Penstock Anchors

### Burbank, CA

303 N Glen Oaks Boulevard

### Calabasas, CA

King Gillette Ranch

### Calexico, CA

Calexico Customs House Cupola

### Carlsbad, CA

Carlsbad Community Church

### Century City, CA

Fox Studios

### Claremont, CA

Padua Hills Theatre  
Porter Hall (Pilgrim Place)

### Coronado, CA

Hotel Del Coronado

### Culver City, CA

Culver Studios - Presidio  
Kirk Douglas Theatre

### Eureka, CA

Carson Block  
Eureka Veterans Memorial Hall  
Humboldt County Courthouse

### El Toro, CA

El Toro Memorial Park

### Flintridge, CA

Flintridge Sacred Heart Academy

### Fullerton, CA

Fullerton Fox Theatre  
John Hetebrink House  
Muckenthaler Cultural Center  
Union Bridge

### Glendale, CA

527 Whiting Woods Road  
Alex Theatre  
Brand Library  
Forest Lawn Cemetery  
Glendale Masonic Temple  
Hunter Residence  
John Lautner House – Schaffer  
Residence

### Guasti, CA

Guasti Mansion

### Hancock Park, CA

Dorothy Chandler House

### Hollywood, CA

Assistance League Theater  
Baby Banana Tree Sculpture  
CBS Columbia Square  
Celebrity Theatre/Sunset & Vine  
El Capitan Theatre & Office Building  
Fonda Theater  
Ford Theatre  
Frolic Room Bar  
Hollywood Bowl  
Hollywood Bungalows  
Hollywood Celebrity Center  
Hollywood Heritage Museum  
Hollywood Masonic Temple  
Hollywood Musicians Union  
Hollywood Palladium  
Louis B. Mayer Building  
Pantages Theatre  
Roosevelt Hotel  
Second Home Hollywood  
Security Pacific Building  
Sunset Bronson Studios  
Sunset Church  
Taft Building  
Television Center  
Vine Campus

### Honolulu, HI

Jali Pavilion  
McKinley High School

### Inglewood, CA

Inglewood Park Cemetery

### Irvine, CA

Irvine Historical Museum  
Irvine Ranch

### Jurupa Valley, CA

Crestmore Manor

### La Jolla, CA

Shops at La Jolla Village  
St. James by-the-Sea  
Episcopal Church  
Wisteria College

### La Verne, CA

Price House

### Laguna Beach, CA

Casa Laguna Hotel & Spa  
Victoria Beach Tower

### Las Vegas, NV

Westside School

### Lincoln Heights, CA

Lincoln Park Gateway

### Long Beach, CA

110 E Ocean Boulevard  
144 N Savona Walk  
All Saints Anglican Cathedral  
Breakers of Long Beach  
Christian Outreach in Action Center  
Famous Department Store  
Farmers & Merchants Bank  
Jergins Pillars  
Jergins Trust Building  
Ocean Center Building  
Polytechnic High School  
Villa Riviera  
Walker Building

### Los Altos Hills, CA

Stegner Studio

### Los Angeles, CA

11753 San Vicente  
15th Street Middle School  
1850 N Cherokee  
28th Street YMCA  
2500 W 7th Street  
440 Seaton  
6381 Hollywood Boulevard  
740 S Broadway  
960 N La Brea Avenue  
AC Hotel Beverly Hills  
Ace Hotel  
African American Museum  
Alameda Square Building  
Aon Center  
Biltmore Hotel  
Biscuit Company Lofts  
Bixel House  
Blackwelder Building  
Bob Hope Patriotic Hall  
Boyle Heights City Hall  
Bradbury Building  
Brentwood Country Club  
Broadway Trade Center  
Bruin Theater  
Bryson Apartments

California Market Center  
Cherokee Hotel  
Commercial Exchange  
Desmond Building  
Downtown Women's Center  
Ebell of Los Angeles  
El Dorado Lofts  
Ennis House  
Fine Arts Building  
Ford Factory  
FourFortyFour South Flower  
Gas Company Lofts  
George C. Page Museum  
Globe Theatre  
Golden State Insurance Building  
Hall of Justice  
Hall of Justice - Charles Manson Cell  
Hilton Checkers Hotel  
Hollenbeck Terrace  
(Santa Fe Coast Lines Hospital)  
Hotel Figueroa  
Hoxton Hotel  
La Marquise  
Los Angeles Law Library  
Los Angeles Times Center  
Metropolitan Lofts  
Metro Water District HQ  
Morissette Residence  
Mount St. Mary's College  
Mount St. Mary's College -  
Doheny Mansion  
Museum of Natural History  
National City Lofts  
NoMad Hotel (Bank of Italy)  
Norton Building  
Occidental College –  
James Swan Hall  
Occidental College –  
McKinnon Center  
Olympic Theatre  
One Bunker Hill  
Pacific Gas & Electric Building  
Paramount Plaza  
Public Storage Building  
Robertson Plaza  
Roosevelt High School  
Roosevelt Lofts  
ROW DTLA  
Rowan Building  
Santa Fe Lofts  
Schaber Cafeteria  
Schindler House  
Schindler House – MAK Center  
Southwest Museum  
St. Cecilia's Church  
St. James Park Apartments  
St. Paul's Lutheran Church  
Standard Hotel  
Starbucks Highland  
(Gilmore Gas Station)  
Superior Courthouse  
Temple Beth  
Temple Beth AM Sanctuary  
The Bloc – Mr. G's  
The MacArthur

## Historic Projects List (CONTINUED)

The Olympic Building  
 Title Insurance and Trust Building  
 Trademark Apartments  
 Trademark Building  
 UCLA Clark Memorial Library  
 UCLA Hershey Hall  
 UCLA Weyburn Hall  
 Union Oil Building  
 Union Station  
 USC McDonald's Swim Stadium  
 USC Tutor Campus Center  
 VA Governor's Mansion  
 VA LA National Cemetery Chapel  
 Van Nuys Apartments  
 Variety Arts Theater  
 Venice High School  
 Village Fox Theatre, Westwood  
 Western Pacific Building

### Malibu, CA

Adamson House

### Marina Del Rey, CA

Marina Del Rey Seawall

### Monrovia, CA

Monrovia Santa Fe Depot

### Monterey, CA

California's First Theatre  
 Hermann Hall

### Monterey Park, CA

F&A Credit Union

### Needles, CA

El Garces Harvey House  
 Hotel & Depot

### Newell, CA

Tule Lake Segregation Center

### Newport Coast, CA

Crystal Cove Cottages

### North Hollywood, CA

NoHo Weddington House  
 Oakwood School

### Norwalk, CA

Hargitt House  
 Sproul House Museum

### Oak Park, CA

Oak Park High School

### Oakland, CA

Brick House Lofts

### Oceanside, CA

Marine Corps Recruit Depot

### Ontario, CA

Bank of Italy  
 Frankish Building

### Orange, CA

101 E Chapman Avenue  
 Bank of Italy  
 Chapman Univ Digital Media  
 Arts Center  
 Chapman Univ Packing House

Chapman Univ Smith Hall  
 Cigar Mural  
 Orange Grove Masonic Temple  
 Orange Public Library Fountain  
 Packing House of Chapman  
 University  
 Smith and Ebert Building  
 Urth Caffe  
 Wells Fargo Bank  
 Woolworth Store

### Pala, CA

Blacktooth House  
 Calac Adobe

### Pasadena, CA

24 E Union Street  
 39 W Colorado Boulevard  
 595 E Colorado Boulevard  
 Ambassador College  
 Baby Banana Tree Sculpture  
 Bank of the West  
 (First Trust Bank Building)  
 Bear Building  
 Caltech – Alles Building  
 Caltech – Baxter Building  
 Caltech – Beckman Lab  
 Caltech – Bridge Annex  
 Caltech – Crellin Laboratory  
 Caltech – Seeley G. Mudd Building  
 Caltech – Thomas Lab  
 Caltech – Tolman Bacher Compound  
 Caltech – Linde + Robinson Lab  
 Constance Hotel  
 Gamble House  
 Glenarm Power Plant  
 Mayfield Senior School  
 One Colorado  
 Pasadena Federal Courthouse  
 Robert Pitcairn, Jr. House  
 Santa Fe Depot (Del Mar Station)  
 Union Savings Building  
 Western Asset Plaza

### Pescadero, CA

Pigeon Point Lighthouse

### Penn Valley, CA

South Yuba River Bridge

### Placentia, CA

George Key Ranch House  
 Kraemer Residence

### Playa Del Rey, CA

Dickinson and Gillespie Building

### Playa Vista, CA

Hercules Campus

### Pomona, CA

The Lassie House

### Rancho Cucamonga, CA

Etiwanda Pacific Electric Depot  
 Toews Residence

### Redlands, CA

Redlands Santa Fe Depot  
 Rondor Building

### Reno, NV

El Cortez Hotel  
 University of Reno - Thompson  
 Building

### Reseda, CA

Mat House

### Riverside, CA

California Baptist University –  
 James Building  
 Camp Anza  
 Jensen-Alvarado Historic Ranch  
 March Air Reserve Base  
 Riverside County Courthouse  
 Ryan Bonamino Park  
 Stalder Building

### Salinas, CA

Monterey Government Center

### San Bernardino, CA

Santa Fe Depot

### San Clemente, CA

Bartlett Building  
 Casa Romantica

### San Diego, CA

1st Presbyterian Church of San Diego  
 Andaz San Diego  
 Bow Wave Fountain  
 Broadway Fountain at Horton Plaza  
 Casa de Balboa  
 Christ United Presbyterian Church  
 Guild Hotel  
 Hotel Anza  
 Hotel Churchill  
 Kettner Lofts  
 Museum of Man  
 New Vision Church  
 Old Police HQ  
 Plaza Hotel  
 Remmen House  
 San Diego County  
 Administration Center  
 San Diego Gas & Electric  
 San Diego Marine Base  
 San Diego Marine Recruit Depot  
 Scripps College Building  
 Scripps Mercy Chapel  
 Sempra Energy HQ  
 Spreckels Organ Pavilion  
 St. George Serbian Orthodox Church  
 Weinberger Courthouse  
 Wilkinson Building

### San Fernando, CA

Lopez Adobe  
 San Fernando Middle School

### San Francisco, CA

888 Brannan Street Building

### San Marino, CA

San Marino Community Church

### San Simeon, CA

Hearst Castle

### San Ysidro, CA

San Ysidro Land Port of Entry

### Santa Ana, CA

Old Orange County Courthouse  
 Unknown Soldier Monument  
 Building

### Santa Barbara, CA

Santa Barbara Airport  
 Santa Barbara Mission

### Santa Clarita, CA

Santa Clarita Historic Jail House

### Santa Monica, CA

1305 2nd Street  
 2600 Colorado Avenue  
 2663 Main Street  
 3002 Main Street  
 3008 Main Street  
 423-429 Ocean Avenue  
 Bradbury House  
 Colorado Campus  
 Marion Davies Guesthouse  
 Mendota Block  
 Oracle HQ  
 Santa Monica City Hall  
 Santa Monica Police Station  
 Santa Monica Post Office  
 Shotgun House

### Santa Paula, CA

Hardison House Historic Barn

### Stanford, CA

Stanford University

### Studio City, CA

Sportsmen's Lodge

### Sylmar, CA

Sylmar Women's Bridge Housing

### Tempe, AZ

ASU University Club

### Torrance, CA

Torrance High School

### Tustin, CA

St. Cecilians Church

### Upland, CA

Grove Theater

### Valencia, CA

Tesoro Adobe

### Venice, CA

Venice Suites – The Potter

### West Hollywood, CA

8899 Beverly Boulevard

### Westminster, CA

Cathay Bank

### White Sands Missile Range, NM

The Army Blockhouse

### Whittier, CA

Andrews Elementary School  
 Fred C. Nelles School





**SPECTRA**  
HISTORIC CONSTRUCTION

*respect.*  
*restore.*  
**revitalize.**

SPECTRA COMPANY  
2510 SUPPLY STREET  
POMONA, CA 91767  
SPECTRACOMPANY.COM  
(800) 375-1771